

Now Available – 900,000+ Industrial Building

Solo Cup announced plans to vacate this building in 2009, and the building is now available.

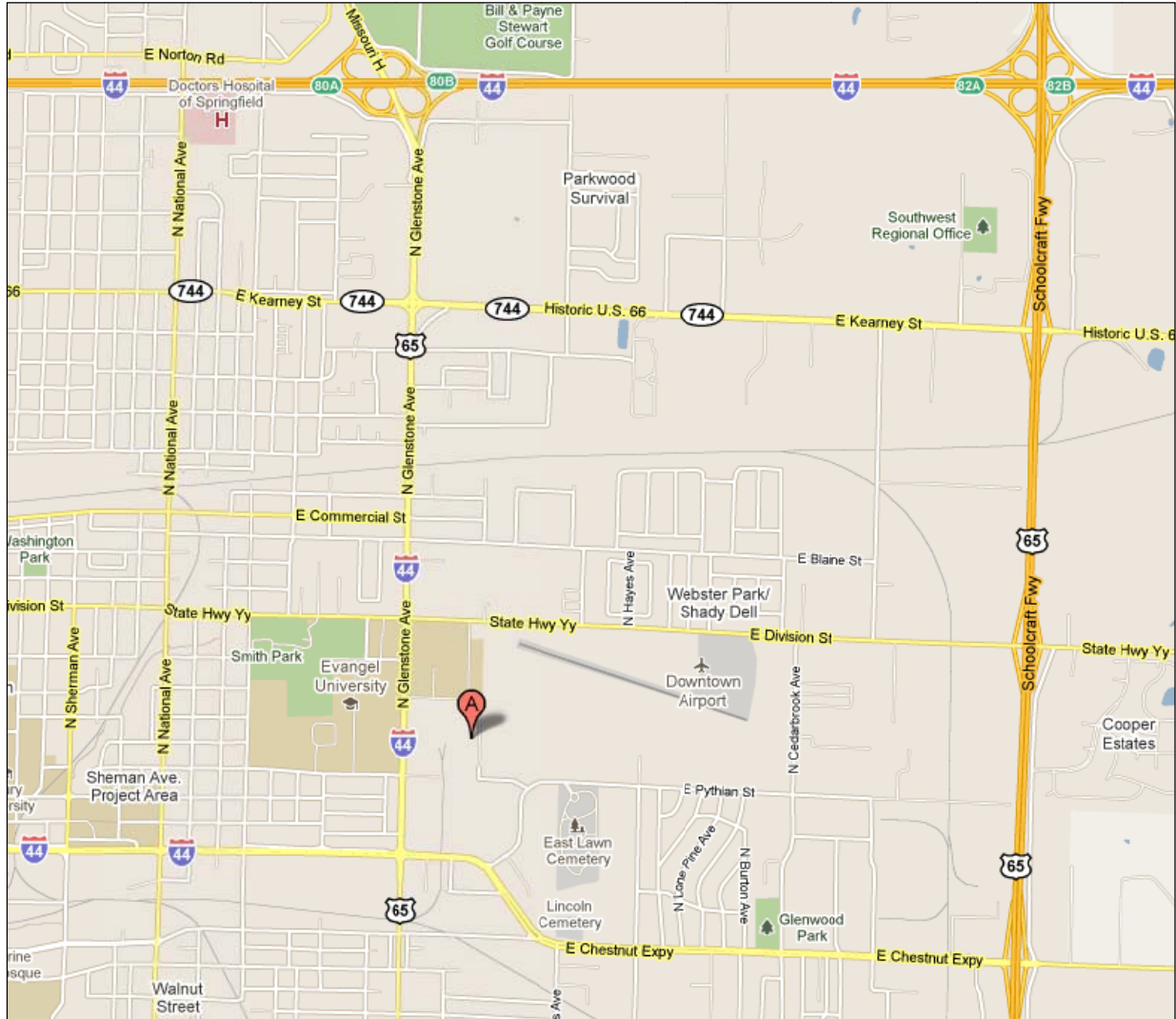


- Total Building Size: 945,160 sq. ft.
- Divisible To: 729,160 sq. ft. for manufacturing/warehouse and 216,000 sq. ft. for warehouse
- Ceiling Heights: 20 feet clear
- Electric Capabilities: 27,250 KVA of distributed 480V power to twelve substations. 2,500 KVA of general 208V power to two substations.
- Water Capabilities: Onsite deep water well with capacity of 600,000 gpd. 2100 TR chilled water capacity for comfort or process cooling.
- Transportation Access: Rail services with siding into two buildings. Located on a major thoroughfare. 2 miles to interstate access. 37 dock doors and 5 drive-in doors.
- Lease Rate: \$2.75 - \$3.50 Abs. Net

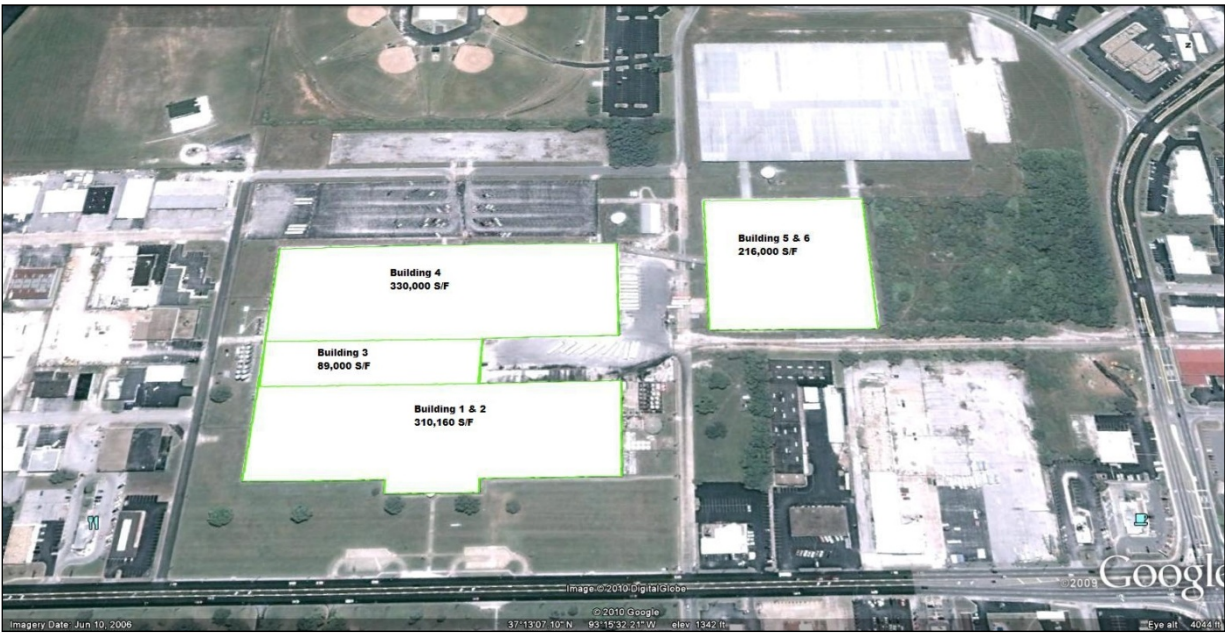
Location

1100 N Glenstone Ave

Springfield, MO 65802



Aerial



Additional Details

Year Built: 1951
Lot Size: 63 acres

Contact Details

Building Information

Patrick Harrington
Davis Properties
417-862-9100

Economic Development Information

Ryan Mooney
Springfield Area Chamber of Commerce
417-862-5567