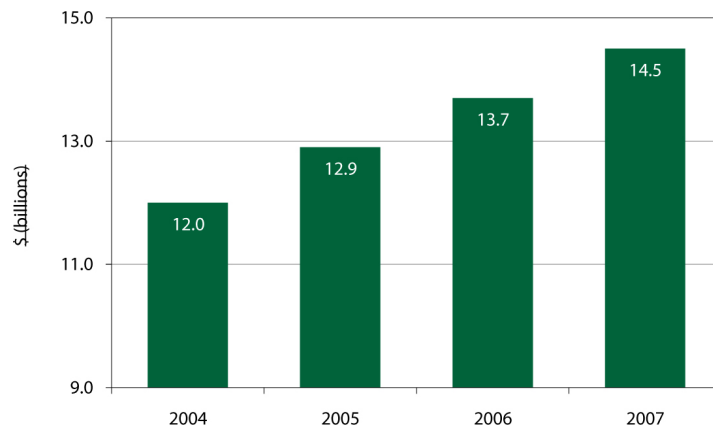


## ECONOMIC OUTPUT

### Gross Metro Product for Springfield Metro Area



SOURCE: US Conference of Mayors & DRI-WEFA

- Springfield's GMP (Gross Metro Product) grew 100% between 1990 and 2000, and it is more than the combined GNP (Gross National Product) of the entire countries of Iceland and Belize.

## TAXES

### INCOME TAX

Missouri Income Tax: Graduated rate; highest is \$315 plus 6% over \$9,000. Part of the federal taxes paid are subtracted from the net income to determine the state taxable income.

Missouri Corporate Income Tax: 6.25%; 50% of the federal taxes paid is subtracted from the net income to determine the net taxable income earned in Missouri.

### SALES TAX

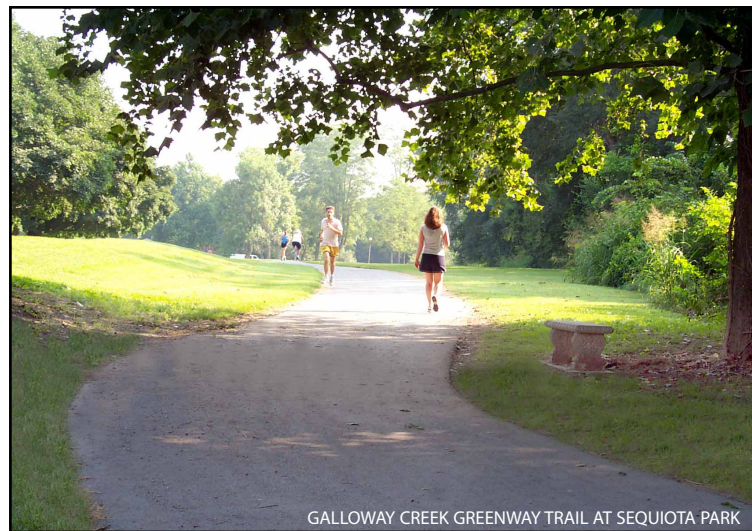
City of Springfield	1.375%
Greene County	1.250%
State of Missouri	4.225%
<b>Total</b>	<b>6.850%</b>

### PROPERTY TAX

Real Property Tax: \$4.9473 per \$100 of assessed value. (A \$1.04 surcharge is added to commercial property.) Property is assessed at the following percentages of their appraised value: commercial - 32%; residential - 19%; agricultural - 12%

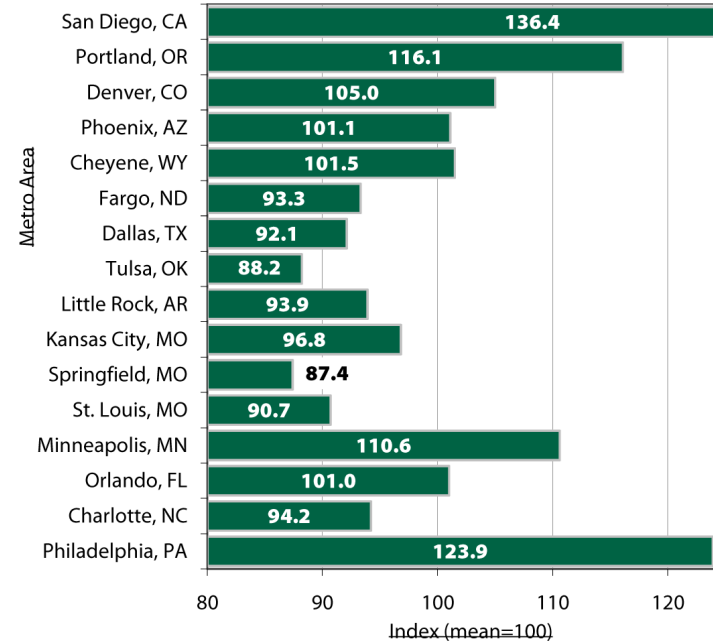
Personal Property Tax: \$4.9473 per \$100 of assessed value. Assessed valuation is one-third (33.3%).

Springfield R-12 School District	\$ 3.6187
City of Springfield	\$ 0.6072
Springfield-Greene County Library	\$ 0.2414
Ozarks Technical Community College	\$ 0.1398
Greene County	\$ 0.1074
Roads & Bridges	\$ 0.1074
Senior Services	\$ 0.0492
Sheltered Workshop	\$ 0.0462
State of Missouri	\$ 0.0300
<b>Total</b>	<b>\$ 4.9473</b>

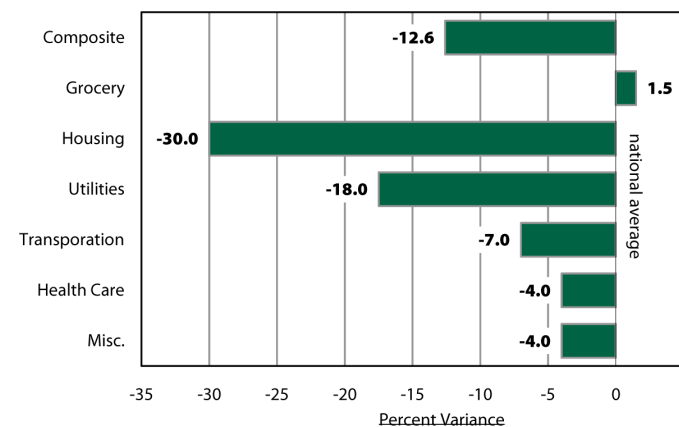


GALLOWAY CREEK GREENWAY TRAIL AT SEQUIOTA PARK

### Cost Of Living Index Comparison



### Cost Of Living Categories For Springfield



SOURCE: Council for Community & Economic Research

# Springfield

## MISSOURI

## DEMOGRAPHIC & STATISTICAL PROFILE



1ST QUARTER, 2009

Springfield Area Chamber of Commerce  
 Springfield Business Development Corporation  
 202 S. John Q. Hammons Parkway  
 Springfield, MO 65806  
 417.862.5567

Full profile available at:

[www.business4springfield.com](http://www.business4springfield.com)

## EXECUTIVE SUMMARY

### SPRINGFIELD METRO AREA

The Springfield Metropolitan Statistical Area includes Greene, Christian, Webster, Polk and Dallas counties in Southwest Missouri.

### NATIONAL RECOGNITION FOR SPRINGFIELD

- Top 10 Place to Live and Work (Employment Review)
- Top 10 Hot City for Entrepreneurs (Entrepreneur Magazine)
- Top 12 Metros for Recruitment & Attraction (Expansion Management)
- Top 20 Mid-Sized City for Entrepreneurs (Inc. Magazine)
- Top 25 Best Place in the U.S. (Forbes Magazine)
- Top 50 Best Performing City (Milken Institute)
- 100 Best Community for Young People (America's Promise)
- 5-Star Quality of Life (Expansion Management Magazine)
- Top 50 Adventure Towns (National Geographic Adventure Magazine)

### WELL-KNOWN COMPANIES OPERATING IN SPRINGFIELD

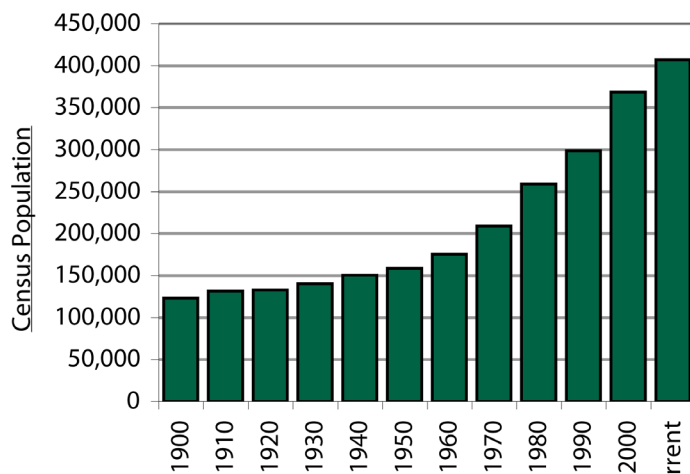
Bass Pro	3M
Kraft Foods	JPMorgan Chase
T-Mobile	Dairy Farmers of America
Jack Henry & Assoc.	O'Reilly Auto Parts
Solo Cup	Burlington Northern Santa Fe
Paul Mueller Company	Springfield Remanufacturing
BKD	

## POPULATION

**Current Springfield Metro Area Population:** 420,020

**Annual Population Growth Rate:** 2.4%

### Population for Springfield Metro Area



SOURCE: Bureau Of The Census

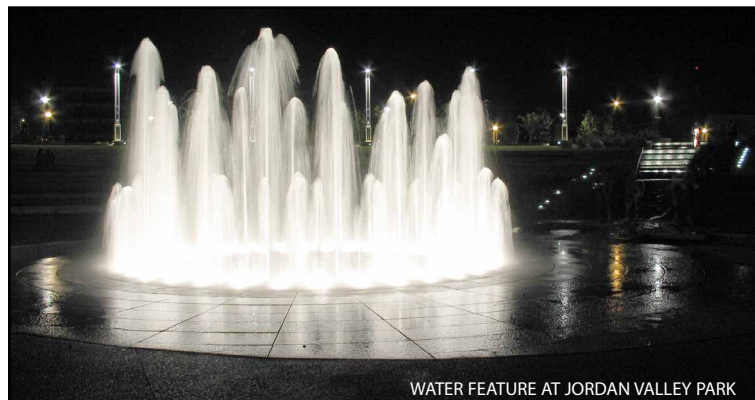
**Springfield City Limits:** 154,777

**Springfield's Economic Area:** 977,728

(defined by the U.S. Dept of Commerce, Bureau Of Economic Analysis; includes Missouri counties of Barry, Christian, Dade, Dallas, Dent, Douglas, Greene, Hickory, Howell, Laclede, Lawrence, Oregon, Ozark, Phelps, Polk, Pulaski, Shannon, Stone, Taney, Texas, Webster, and Wright, and the Arkansas counties of Baxter, Boone, Carroll, Marion, and Newton.)

**Ozarks Regional Economic Partnership:** 578,663

(10-county area; includes Barry, Christian, Dade, Dallas, Lawrence, Greene, Polk, Stone, Taney, and Webster counties.)

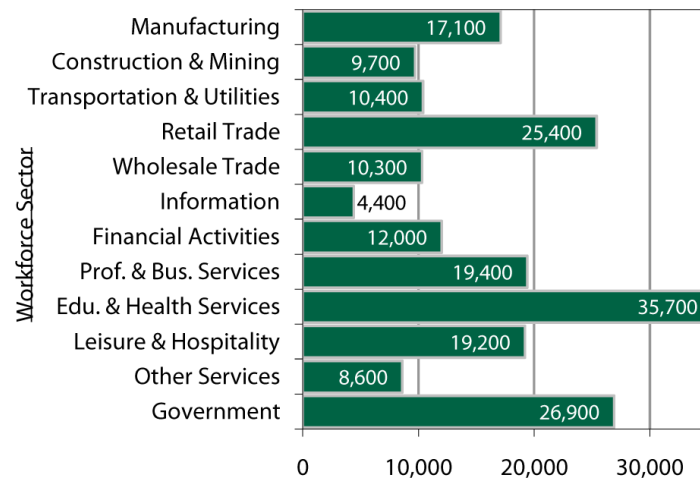


WATER FEATURE AT JORDAN VALLEY PARK

## WORKFORCE

**Current Springfield Metro Area Workforce:** 214,670  
**Annual Workforce Growth Rate:** 2.7%

### Average Employment By Sector

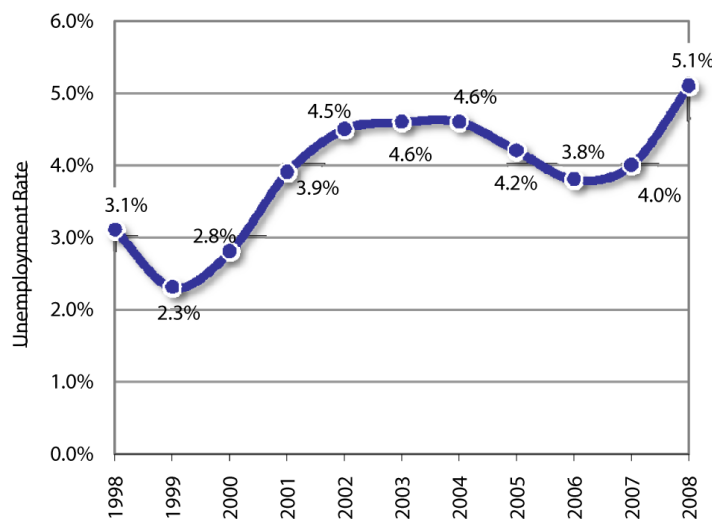


SOURCE: Bureau of Labor Statistics

## EMPLOYMENT

**Current Unemployment Rate for Springfield Metro:** 7.6%

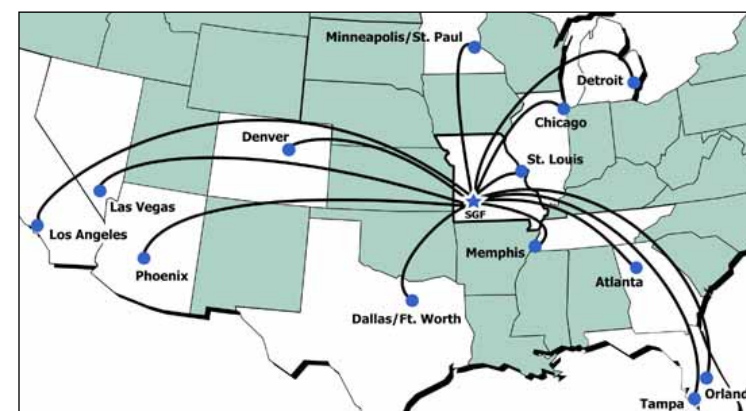
### Unemployment Rate for Springfield Metro Area



SOURCE: Bureau Of Labor Statistics

## AIRPORT

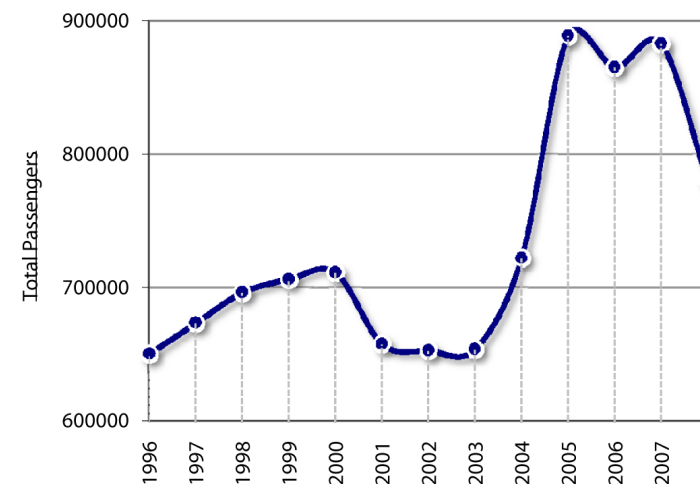
Airline	Connections	Flights Daily
American Eagle	Chicago	3
American Eagle	Dallas/Ft. Worth	9
American Eagle	St. Louis	1
Northwest Airlines	Memphis	3
Northwest Airlink	Detroit	1
Northwest Airlink	Minneapolis/St. Paul	1
United Express	Chicago	5
United Express	Denver	4
Delta Connection	Atlanta	3
Allegiant Air	Las Vegas	5 weekly
Allegiant Air	Los Angeles	2 weekly
Allegiant Air	Orlando	3 weekly
Allegiant Air	Phoenix	2 weekly
Allegiant Air	Tampa	2 weekly



In 2005 Springfield-Branson National Airport (SGF) was the 4th fastest growing airport in the U.S. and the process to build a new terminal building is underway.

Runways are 7,003 ft. and 8,000 ft. in length. The airport offers general aviation (24hrs.) and cargo services which include FedEx, UPS, and Airborne Express as well as a U.S. Customs office and a Foreign Trade Zone.

### Total Passengers for SGF



SOURCE: Springfield-Branson National Airport

## TRANSPORTATION



### DISTANCES TO SPRINGFIELD

City	Miles	Days by Rail	City	Miles	Days by Rail
Kansas City	174	1	Denver	780	4
St. Louis	220	1	Atlanta	845	3
Memphis	285	1	New York	1,196	5
Dallas	430	2	Boston	1,407	4
Chicago	515	3	Los Angeles	1,651	5
Detroit	754	4	Seattle	2,032	6

All cities are one day by motor freight except New York, Boston, Los Angeles and Seattle which are two days.

## UTILITIES & TELECOMMUNICATIONS

Electric, water, and natural gas are provided through City Utilities of Springfield within the city limits and the general vicinity. [www.cityutilities.net](http://www.cityutilities.net)

Sewer service is provided by the City of Springfield within the urban service area. [www.springfieldmo.gov](http://www.springfieldmo.gov)

Electric service in the outlying areas is provided by Ozark Electric Cooperative, Southwest Electric Cooperative, Webster Electric Cooperative and White River Valley Electric Cooperative.

AT&T is the primary provider of telecommunications infrastructure and services. Many other companies also provide similar services throughout the Springfield area.

Fiber optic services are available within the city limits and in additional areas of increased development. High-speed internet, Sonet rings and redundant capabilities are also available in these areas.

Numerous companies, including Verizon (MCI), Sprint and AT&T, have long distance points of presence (POP's) located in Springfield. Mostly POP's are situated within the downtown / center city area.