

springfield

missouri



july 2003



JORDAN VALLEY PARK IN DOWNTOWN SPRINGFIELD

which springfield?

The Scoop on the Springfields

25 states have an incorporated "Springfield."

The Census Bureau recognizes 39 locations, some states with two or more, as "Springfield."

There are over 70 places in the U.S. that appear on the map as "Springfield."

Only three Springfields are part of a metro area population of over 250,000.

Only one "Springfield" is the fastest growing in both population and income: Springfield, Missouri.

City Population

| | |
|------------------------------|----------------|
| Springfield, Massachusetts | 151,915 |
| Springfield, Missouri | 151,010 |
| Springfield, Illinois | 111,834 |
| Springfield, Ohio | 64,132 |
| Springfield, Oregon | 54,035 |

Annual Population Growth

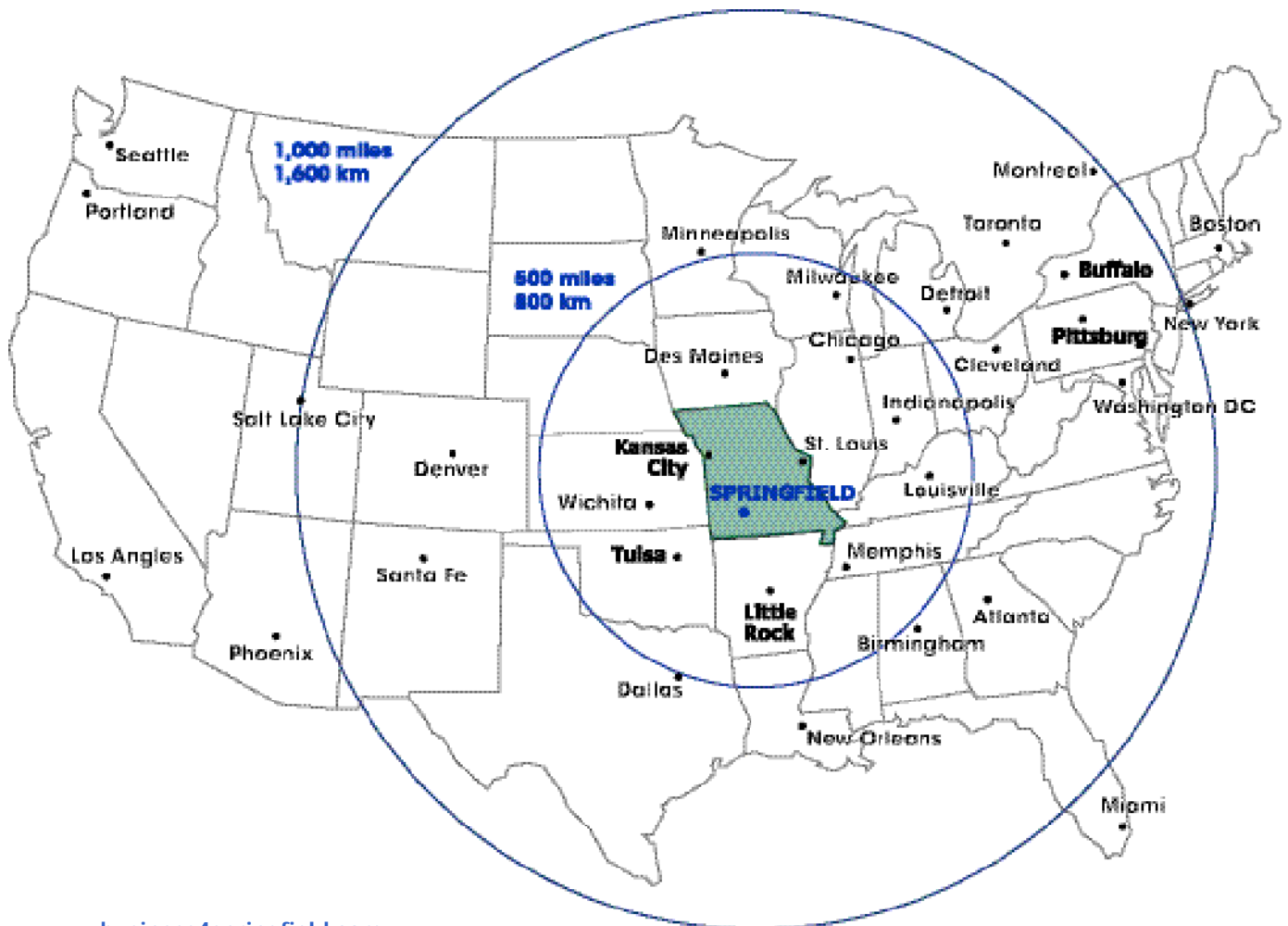
| | |
|------------------------------|-------------|
| Springfield, Missouri | 2.3% |
| Eugene-Springfield, Oregon | 1.4% |
| Springfield, Illinois | 0.6% |
| Springfield, Massachusetts | 0.1% |
| Springfield, Ohio | -0.2% |

Metro Population

| | |
|------------------------------|----------------|
| Springfield, Massachusetts | 591,932 |
| Springfield, Missouri | 378,727 |
| Eugene-Springfield, Oregon | 326,666 |
| Springfield, Illinois | 203,201 |
| Springfield, Ohio | 143,416 |

Annual Income Growth

| | |
|------------------------------|-------------|
| Springfield, Missouri | 5.3% |
| Eugene-Springfield, Oregon | 5.2% |
| Springfield, Illinois | 5.0% |
| Springfield, Massachusetts | 4.8% |
| Springfield, Ohio | 4.6% |



recent developments

Health Care

Two of the top 100 hospitals in the U.S. are located in Springfield, and both are in the midst of expansion projects totaling \$500 million. CoxHealth and St. John's Regional Health Center employ 24,000 people throughout the region and make a \$3 billion impact on the economy each year.



Downtown Redevelopment

All eyes are focused on Springfield's center city where public and private developers are investing \$125 million to boost residents' demand for a metropolitan lifestyle. With Jordan Valley Park at the heart, the revitalized downtown features a new baseball stadium, trendy restaurants, luxury loft apartments, theatres and art galleries.



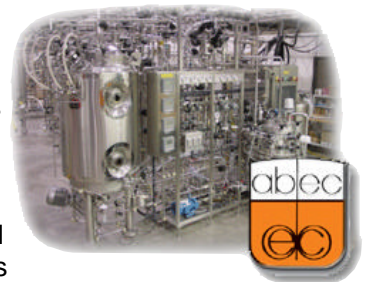
Bank One

More than 400 new jobs were added this year to Springfield's Bank One facility, an inbound customer service call center employing 1,300 people. Bank One chose Springfield in 1997, citing its quality labor force and competitive operating costs.



ABEC

Associated Bio-Engineers and Consultants, Inc. has announced a \$2 million capital investment in Springfield's Partnership Industrial Center that translates into 80 jobs when the plant opens in 2004. ABEC manufactures stainless steel vessels and bioreactors for the pharmaceutical and biotech industries.



Partnership Industrial Center West

Quality jobs are the target of the two public-private industrial parks in Springfield. The newest, Partnership Industrial Center West, just added exercise equipment manufacturer Stamina Products and Executive Coach Builders, a manufacturer of limousines, netting 100 jobs in the process.



Airport Terminal

An investment of \$100 million over five years is funding a major expansion at the Springfield-Branson Regional Airport. Taxiways and expanded runways are already in place to serve rapid growth in the Springfield region.



springfield market



You can do business anywhere. But Springfield, Missouri's central location keeps you in touch with customers on both coasts, and in between. We're near the geographic center of the U.S., and our Central Time Zone gives businesses an advantage.

As a distribution hub, Springfield provides easy access on four-lane highways to major Midwest markets. That's the reason many trucking companies have selected Springfield as their base.

Springfield's strength lies in a thriving business community, diverse in many ways. It is also noted for its stable workforce, and the strong work ethic people bring to their jobs. That may be why Springfield consistently ranks as a top area for starting and growing a business. Health care, small businesses, manufacturing, retail and tourism find the region the perfect place for success.

Springfield's gross metro product doubled to \$10.8 billion over the past decade, making Springfield the fastest growing economy in Missouri and one of the top 50 in the nation.

Springfield is recognized by Employment Review as a Top 10 Place To Live & Work



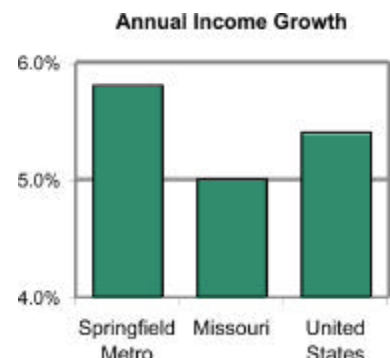
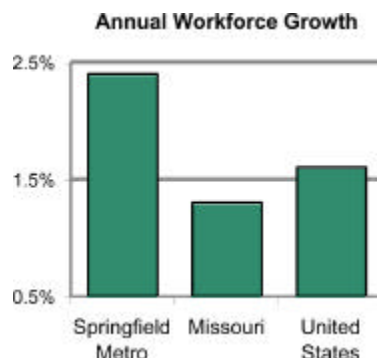
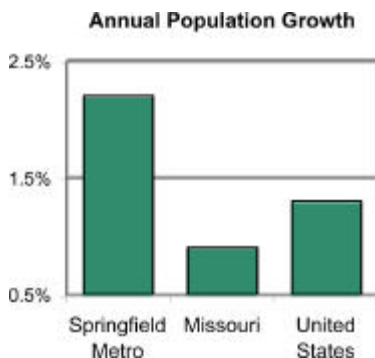
1. Austin, TX
2. Raleigh/Durham/Chapel Hill, NC
3. Sarasota, FL
4. Denver, CO
5. Ft. Worth, TX
6. Orlando, FL
7. Colorado Springs, CO
8. San Antonio, TX
9. Springfield, MO
10. Atlanta, GA

A favorable tax structure attracts new businesses. Likewise, a strong partnership forged between city and county government, City Utilities, and the Springfield Area Chamber of Commerce eases the way for businesses looking to expand or relocate to the area.

Springfield supports a flourishing arts community and blue ribbon schools. Its beautiful neighborhoods benefit from a favorable tax structure and our overall low cost of living. Health care is a major employer and our many clinics and facilities serve as a medical magnet for the surrounding region. In fact, two of the top 100 hospitals are based here.

Situated in the heart of America, Springfield is surrounded by the natural beauty of the Ozarks, providing abundant outdoor recreation opportunities. Its temperate climate features the best of the four seasons. Springfield cultivates a community spirit where residents young and old agree: *Everywhere should be like this.*

Amid the national recession, the Springfield region's economy remains the bright spot driving Missouri economic growth.





PARTNERSHIP INDUSTRIAL CENTER WEST

410 Acre Industrial Park
379 Developable Acres

All Underground Utilities
Electric, Natural Gas, Water & Sewer

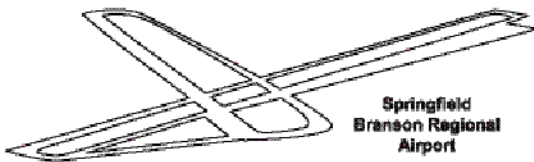
Fiber Optic Telecommunications

Rail Served

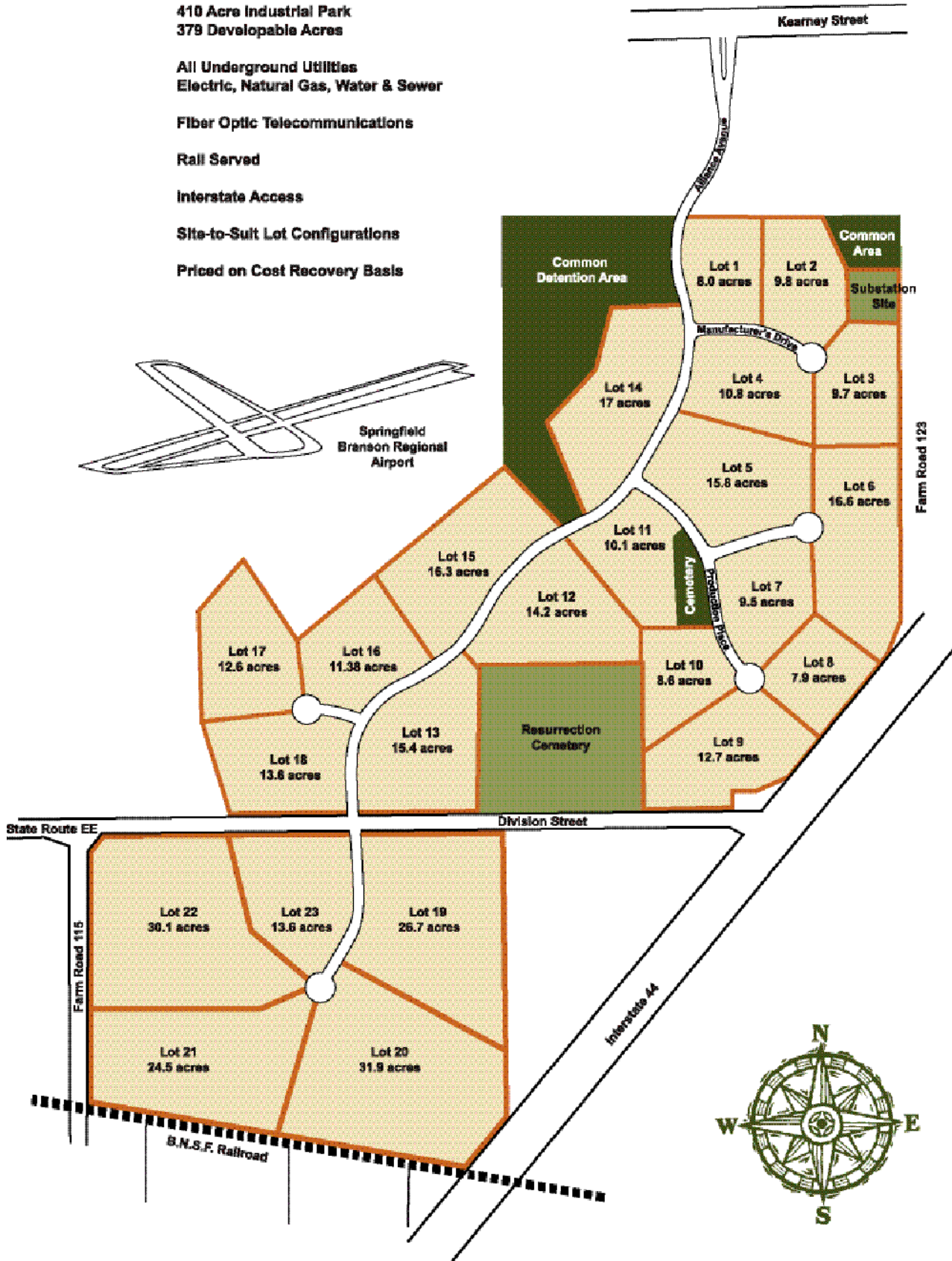
Interstate Access

Site-to-Suit Lot Configurations

Priced on Cost Recovery Basis



Springfield
Branson Regional
Airport



missouri incentives



For more information on incentives visit
missouridevelopment.org

Financial Assistance

Business Facility Tax Credits

These credits can help offset state corporate income liability. Benefits include \$75 - \$100 per new job for 10 years and \$75 - \$100 per \$100,000 new capital investment for 10 years. Qualifying businesses include manufacturers, office businesses, warehouse businesses, insurance companies, wholesalers, research and development organizations and others.

Enterprise Zone Tax Benefits

Sixty-six enterprise zones have been designated by the Missouri Department of Economic Development. Tax credits include up to 2% of new capital (up to 10 years) and \$400 - \$1,600 per new job (up to 10 years). Local real property tax abatements include 50% - 100% for 10 to 25 years and 50% income exemption is also available. Eligible applicants include manufacturers, wholesalers, warehouse businesses and others.

Brownfield Redevelopment Program

This program offers sellable tax credits that provide up to 100% of remediation costs for abandoned or under-utilized areas where hazardous waste is present. The project must be accepted into the Missouri Department of Natural Resources Voluntary Cleanup Program.

Training Assistance

Community College New Jobs Training Program

Businesses creating a substantial number of new jobs in Missouri may be eligible for training funds. Training costs such as instructors' salaries, curriculum development, on-the-job training, training materials and vendor training are included in the funding. Funds are generated by the sale of bonds by the community college, which are then retired using a portion of the employer's withholding tax.

Regional Resources

Missouri LocationOne (ML1)

A new Internet-based economic development tool now exists that literally puts Missouri sites at your fingertips! Missouri LocationOne offers Missouri community, building and land site profiles that are readily available to you at the click of a mouse.

This new database system provides valuable and consistent data on behalf of all Missouri communities and is accessible by regions.

partnership contacts

Springfield Area Chamber of Commerce and Springfield Business & Development Corp.

202 S. John Q. Hammons Parkway
417-862-5567



Greg Williams, CEcD
Senior Vice-President,
Economic Development

greg@springfieldchamber.com



Allen Kunkel, CEcD
Manager of Regional Development
Ozarks Regional Economic Partnership

allen@springfieldchamber.com



Ryan Mooney
Program Coordinator,
Economic Development

ryan@springfieldchamber.com

State of Missouri Department of Economic Development

301 W. High Street, Jefferson City, MO
573-751-9048



Missy Bonnot
Business Services Manager

mbonnot@ded.state.mo.us

www.business4springfield.com

Springfield's Partnership For Economic Development

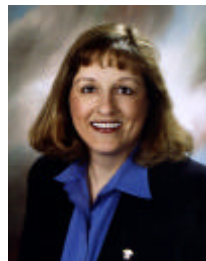
Strong cooperation between our partners means a streamlined approach to business development.

The partnership team works together to make it easy for business development. This approach provides one point of contact to make projects happen.

We can assist developments with competitive utility rates, tax credits and abatements, and customized training in one of the most pro-business environments in the country.

City of Springfield Planning and Development Department

840 N. Boonville Avenue
417-864-1031



Mary Lilly Smith
Economic Development Director

mary_lilly_smith@ci.springfield.mo.us

City Utilities of Springfield

301 E. Central Street
417-831-8311



Karl Plumpe
Associate General Manager,
Economic Development

kplumpe@cityutilities.net

Greene County

940 N. Boonville Avenue
417-868-4015



Jeff Reinold
Budget Officer

jreinold@greencountymo.org