

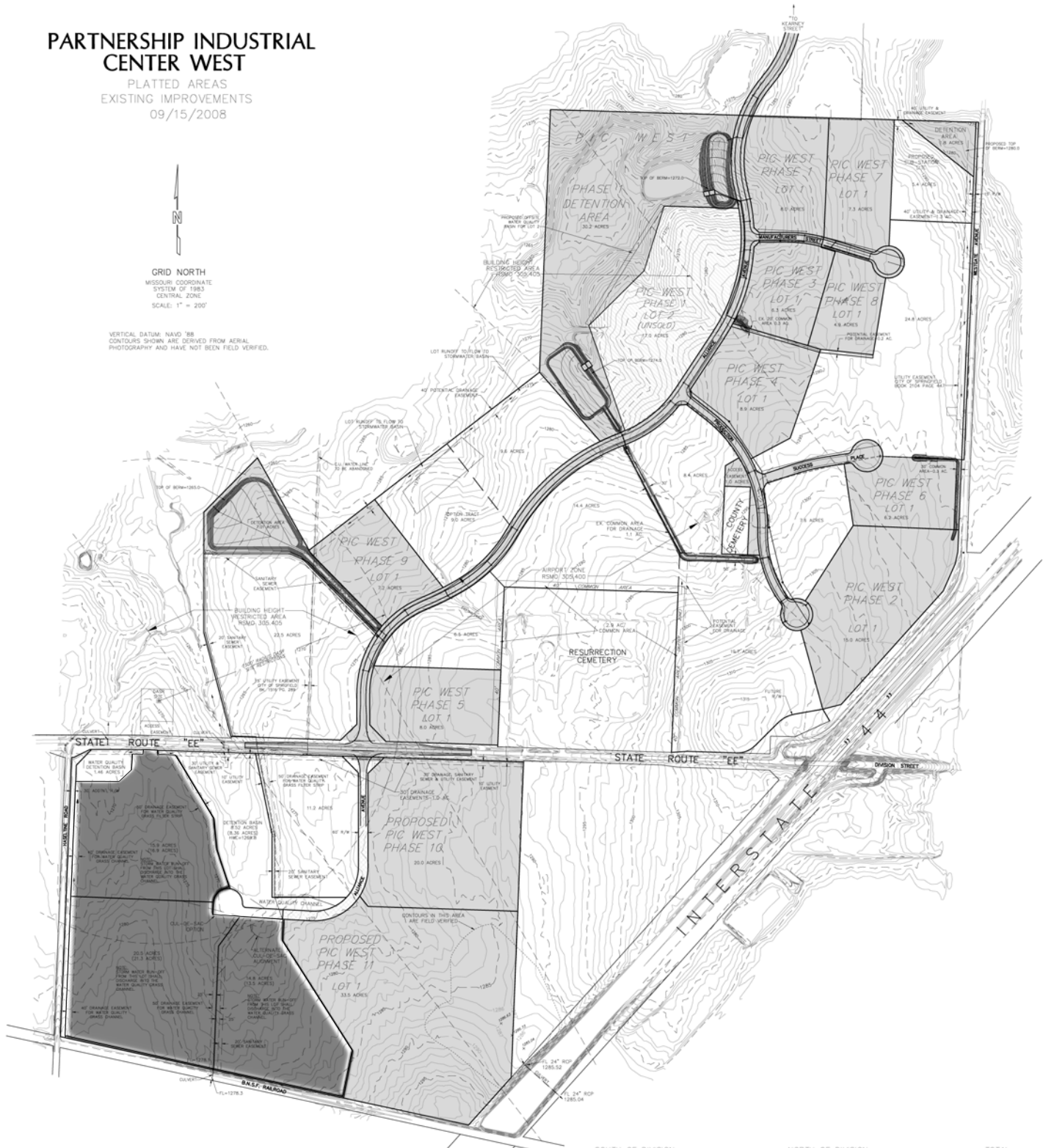
PARTNERSHIP INDUSTRIAL CENTER WEST

PLATTED AREAS
EXISTING IMPROVEMENTS
09/15/2008



GRID NORTH
MISSOURI COORDINATE
SYSTEM OF 1983
CENTRAL ZONE
SCALE: 1" = 200'

VERTICAL DATUM: NAVD 88
CONTOURS SHOWN ARE DERIVED FROM AERIAL
PHOTOGRAPHY AND HAVE NOT BEEN FIELD VERIFIED.



LEGEND
 PROPOSED CONSTRUCTION 2008
 WATER QUALITY STRIP EASEMENT

	SOUTH OF DIVISION	NORTH OF DIVISION	TOTAL
TOTAL AREA	130.9 AC.	277.2 AC.	408.1 AC.
EXISTING AND PROPOSED RIGHT-OF-WAY	4.9 AC.	18.3 AC.	23.2 AC.
EXISTING AREA FOR DETENTION	8.4 AC.	39.0 AC.	47.4 AC.
POTENTIAL AREA FOR DETENTION	-	1.5 AC.	1.5 AC.
EXISTING COMMON AREA FOR DRAINAGE CHANNELS	1.5 AC.	1.7 AC.	3.2 AC.
POTENTIAL COMMON AREA FOR DRAINAGE CHANNELS	-	0.3 AC.	0.3 AC.
EXISTING EASEMENTS FOR COUNTY CEMETERY	-	1.0 AC.	1.0 AC.
POTENTIAL COMMON AREA FOR DRAINAGE CHANNELS	-	2.9 AC.	2.9 AC.
BUFFER ZONE FOR RESURRECTION CEMETERY	-	5.4 AC.	5.4 AC.
CITY UTILITIES SUBSTATION	-	87.0 AC.	140.9 AC.
PLATTED LOTS	53.5 AC.	-	53.5 AC.
LOT 2 PHASE 1 - UNSOLD	-	-	-17.0 AC.
REMAINING BUILDABLE ACRES	62.6 AC.	138.6 AC.	201.2 AC.
LOT 2, PH. 1 & 9 AC. PH. 9 OPTION TRACT	-	-	-
POTENTIAL EASEMENTS FOR DRAINAGE	4.7 AC.	3.5 AC.	8.2 AC.